

FEATURE GUIDE: TECDIS 4.8.3.10

The release of TECDIS 4.8.3.10 adds Navtor NavBox Route Library and a range of other features to TECDIS. For a complete list of changes, see the release history on <https://telko.no>. Here you will also find Feature Guides for previous releases.

Get access to all new features with TELCARE

TELCARE is our Software as a Service solution for TECDIS. With a subscription to TELCARE, you get access to all new software functions developed for TECDIS.

TELCARE
BY TELKO

In TECDIS 4.8.3.3, 4.8.3.4 and 4.8.3.6 we added great features such as TotalTide integration, Rendezvous and drag'n'drop editing of route lane and turn radius, Curved EBL, EMRI autopilot interface to Curved EBL, Speed To Go (STG) Calculator, Improved route monitoring and support for Scandinavian Micro Systems Optical Bearing Device (OBD) to the list of TELCARE features. In TECDIS 4.8.3.7 added Bow Crossing calculation to TELCARE as well as other smaller features, and the previous release added Route Library with alternate route segment support, password protection of routes and dual ETA route monitoring.

Go to <https://telko.no> to order TELCARE for your vessels.

New TELCARE feature: NavBox route library

It is now possible to connect TECDIS with Navtor NavBox and give users access to routes stored in the NavBox, for example by the Navtor NavStation software. It is also possible to add, update and remove routes on the NavBox from TECDIS.

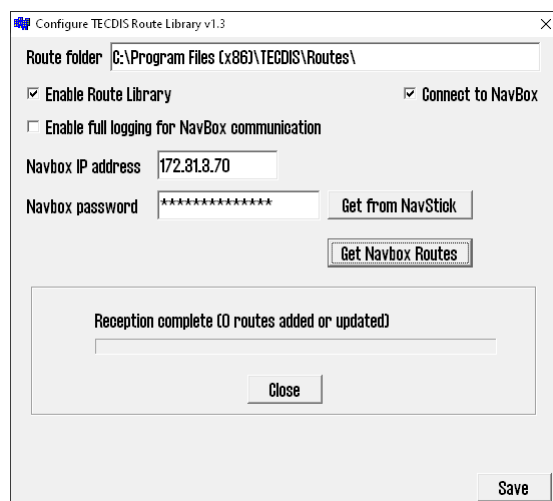
Configuration

In order to make use of the NavBox route library feature, it must first be configured.

Run the Route Library configuration tool, located at 'C:\Program Files (x86)\TECDIS\ConfigRouteLibrary'.

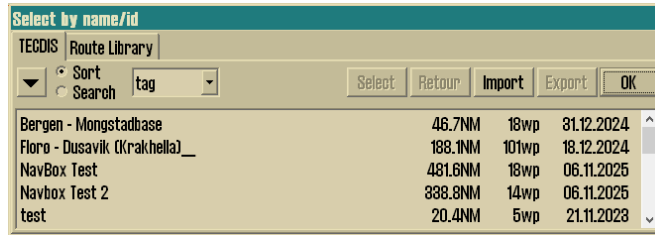
Select 'Enable Route Library' and 'Connect to NavBox'. Enter the NavBox IP address and either enter the NavBox password if known, or connect the NavStick to the TECDIS and press 'Get from NavStick'.

Finally, press 'Get NavBox Routes' to test the connection and initialize the library.



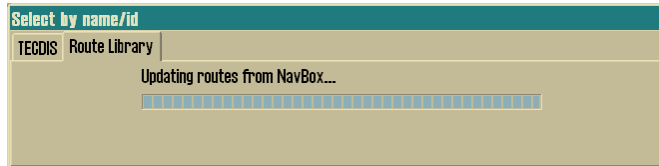
Route Library usage

When the preparations have been completed, the route selection dialog in TECDIS now includes the two sections 'TECDIS' and 'Route Library'.

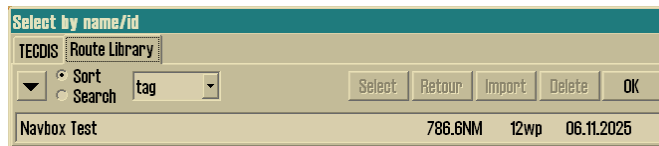


The 'TECDIS' section presents the traditional route selection dialog where routes present in the TECDIS database are available as previously. These routes may be edited and otherwise used as normal.

The 'Route Library' section shows all routes present on the NavBox. These routes may be selected for use, but may not be edited.



Each time the route library tab is selected, the list will be refreshed with any changes on the NavBox.



The down arrow button in the upper left corner of the dialog may be used to toggle the size of the route list between two sizes.

A route may be deleted from the NavBox by selecting it in the list, pressing the 'Delete' at the top right part of the dialog and confirming.

To select a route, choose a route from the list and press 'OK' or 'Select'

Important: Once selected, the route in use in TECDIS will remain unchanged until a new route selection is made. If the route is changed on the NavBox from another source (for example another TECDIS unit or the NavStation software), the route must be selected again for any changes to be applied.



It is possible to create a local editable copy of the route by pressing the 'Copy active route to new route' button on the route toolbar.



A local TECDIS route may be sent to the NavBox route library by pressing the 'Make, edit and print waypoint list' button on the toolbar and pressing the 'Send to NavBox' button at the bottom of the waypoint list window.

8	62° 04.858' N	003° 58.061' E	45.0	335.7°	5.0	0.05	0.10	9 hr 00 min
9	62° 45.802' N	003° 18.159' E	90.6	054.8°	5.0	0.05	0.10	18 hr 07 min

Close Save Print ENC Update Status Send to NavBox Page 1 of 1

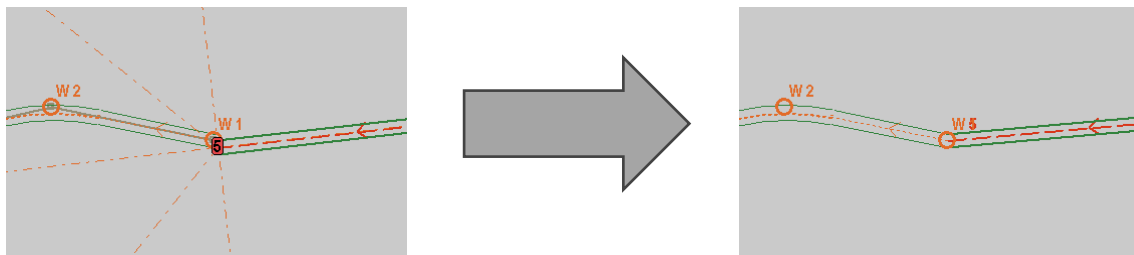
New Feature: Digital I/O via HT 00273 OPT-A1

The Hatteland HT 00273 OPT-A1 I/O peripheral may now be used for connecting TECDIS to contact closure type alarm management systems and operator fitness monitoring systems.

Note to technicians: Configure the connection in TECDIS Setup to port '--' and type 'digi' to use the HT 00273 OPT-A1 for Alarm Control and/or BNWAS. Logging is available by setting the INI file option 'ht273_logging' to 1 for error logging or 2 for full logging. The log will be available in the file 'Ht273.log' in the Log folder.

New Feature: Snap to secondary route waypoints when editing primary route

In some circumstances it may be desirable to place a waypoint in one route precisely on top of a waypoint in another route, for example when routes are intended to be combined using the powerful facilities in TECDIS for combining routes.

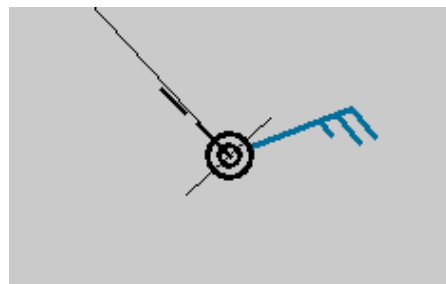


Now, if a secondary route has been selected and route drawing or editing of a primary route is in progress, waypoints placed close to secondary route waypoints will snap to the exact position of the secondary route waypoint.

New TELCARE feature: Option for wind arrow on ship symbol

It is now possible to show a wind arrow on the double circle ship symbol when the cursor is hovered over the ship symbol.

Note to technicians: This is activated by setting the INI file option 'wind_arrow_on_ship' to 1. By setting this value to 2, the wind arrow is displayed at all times.



Other fixes and improvements

TECDIS 4.8.3.10 also contains several other improvements.

- **Support for new Hatteland monitors**
TECDIS now supports the new T27 and T40 Hatteland monitor series, as well as new monitor sizes JH21 and HD43.
- **Changing route default speed on a password protected route**
When a route is password protected, it is now possible to change the default speed for the route without unlocking the route by entering the password.
- **Track Control with FAP-3000 improvements**
When the ship is moving backwards outside of Track Control mode, this no longer results in Track Control related warnings.
- **Route library alternative route option sorting improved**
In the route library route options window, alternative route sections are now sorted primarily by start waypoint (as before), then alphabetically.
- **Toolbar icon visibility in day mode improved**
The toolbar icon contrast when using the day palette has been improved.
- **New INI option for adjusting monitor communication heartbeat added**
Setting the new INI option 'monitor_force_swi_hb' to 1 will force TECDIS to use the SWI SCOM command for heartbeat monitoring of the monitor communication.
- **Fix for specific situations with Harbor mode causing Off track alarm suppression**
It was previously possible for Off track alarms to be suppressed by harbor mode in specific situations. This may not occur in this version.