

TELchart ECS Upgrade guide:

TELchart ECS 3.8.3.1

With the new TELchart ECS 3.8.3.1 upgrade your TELchart ECS is compliant with the new IHO Performance Library 4.

Chapter 1. Preparations

1.1. What you need

- The system has to be running **TELchart ECS 3.7.2.32**
- TELchartECS3831Update.exe
- This upgrade guide
- The TELchart ECS Feature Guide for version 3.8.3.1
- **Charts**
 - Chart media
 - Chart licenses **(including SuppFree-licenses if applicable!)**
 - C-Map chart Server Guide – if you have C-Map Professional+ charts

1.2. Updating TELchart ECS software to the latest version

To make sure your TELchart ECS upgrade is as predictable as possible, it is required that you upgrade to version 3.8.3.1 from version **3.7.2.32**.

You can check what software version you are running by pressing **F4** on your keyboard. This opens the **Chart Legend**, where the system ID and software version number is listed in the top row.



If your version is anything other than 3.7.2.32, a combination of updates is required. Use the following examples to determine which are necessary:

3.5.xx	You do not have a TELchart ECS, but a TELchart V3. This is an earlier product, requiring a purchased upgrade.	Contact furuno@furuno.no
3.7.1.xx	All TELchart ECS with version 3.7.1.xx need to be upgraded to version 4.7.2.32	Use TELchartECS372Installer.exe And TELchartECSUpdate.exe
3.7.2.31	All TELchart ECS with version 3.7.2.31 and lower need to be upgraded to 3.7.2.32	Use TELchartECSUpdate.exe

1.3. Charts and licenses

Before the upgrade can be performed, you need to check what charts are installed and in use.



This is because you need to uninstall your charts while performing this upgrade. This is required for all units, regardless of chart provider!

1. Find what charts are currently used by opening the menu in TELchart ECS.
2. There, select the **Setup** menu.
3. In the chart database field, make a note of which charts are in use:

Label in TELCHART ECS	Product name	Chart provider	Chart media
[S63-XX] <i>XX represents code of HO</i>	AVCS, Primar, etc	Navtor, ChartCo, Nautisk etc	USB dongle, DVD or network drive
[ENC],[ENC+] and [Professional+]	ENC, ENC+ and Professional+	C-Map	Chart DVD
[S57]	S57		USB dongle

4. **The charts that are in use have a checkmark beside them.**
5. Now locate the chart media for the chart databases, and their chart licenses (cell permit for S63, password.usr file for C-Map). If you need to download C-Map Professional+, please read the **C-Map chart server guide** for details on how to download and use.

Chapter 2. Upgrading TELchart ECS to version 3.8.3.1

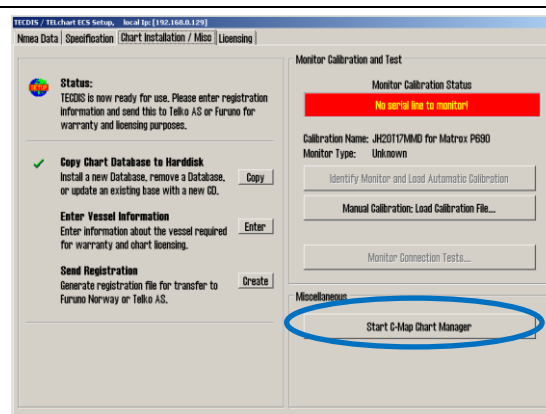
2.1. Removing existing charts and licenses

Do the following:

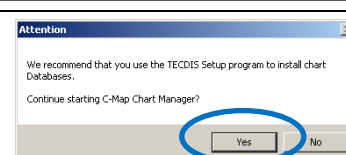
1. Exit the TELchart ECS program.
2. Start **TELchart ECS Setup**.

3. Go to the **Chart installation/Misc** tab.

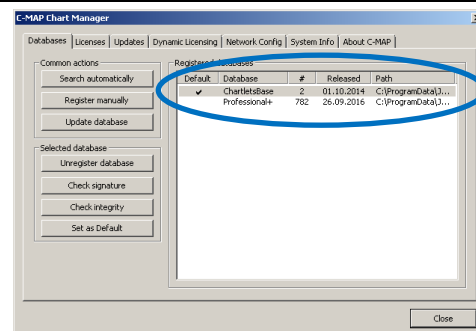
4. Press the **Start C-Map Chart Manager** button.



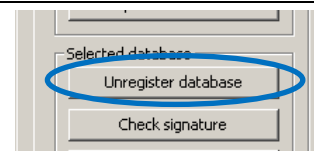
5. A warning appears, press **Yes** to continue. The C-Map Chart Manager program starts.



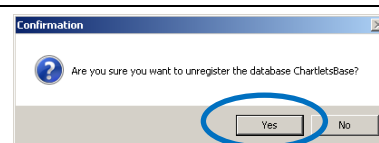
6. Select a database by clicking on the entry for it in the *Registered databases* table.



7. Press the **Unregister database** button.



8. A confirmation message appears. Press Yes. The database is now deleted.

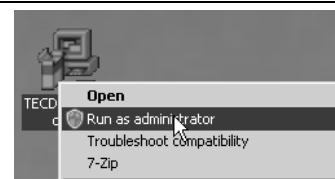


9. Repeat steps 7-8 for all chart databases, until the database list is blank.
 10. **Close** C-Map Chart Manager and TELchart ECS Setup.
 11. Continue to the next chapter.

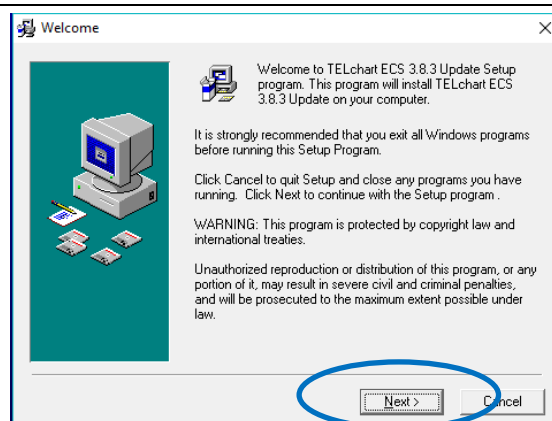
2.2. Running TELCHART ECS483Update.exe

13. Locate the **TELCHART ECS383Update.exe** file and double click it to start the program.

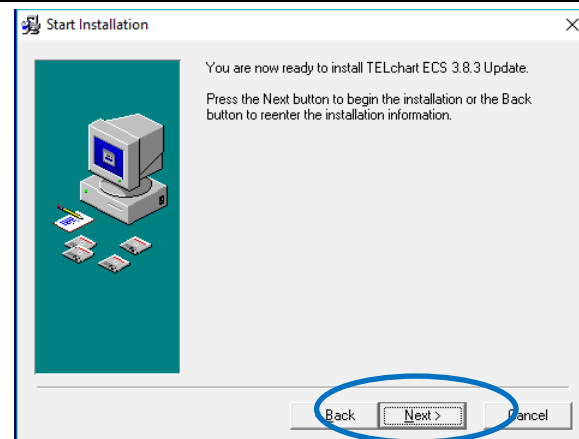
If you get an error message, try "run as administrator"



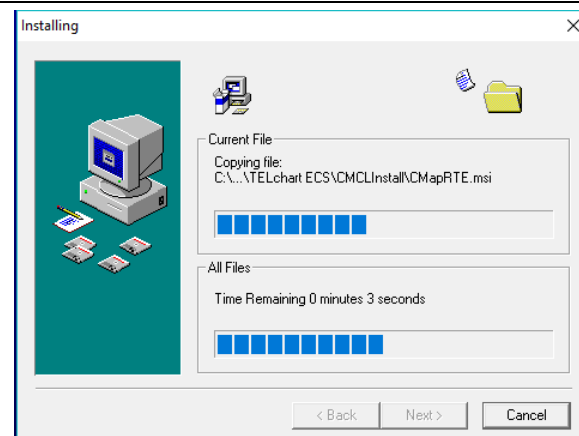
14. The TELchart ECS 3.8.3.1 update program appears. Press the **Next** button.



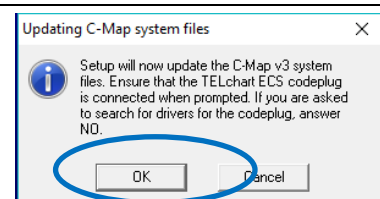
15. Press the **Next** button to start the installation.



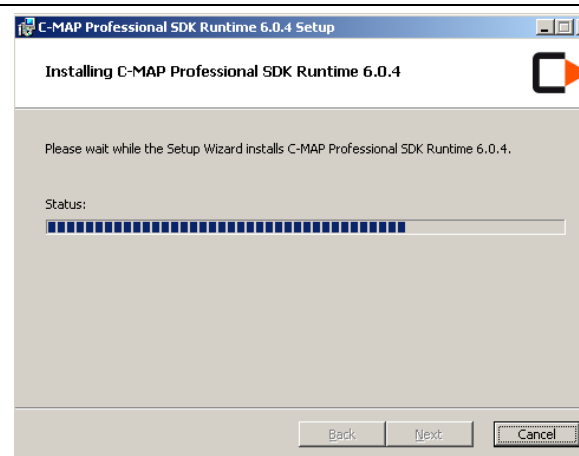
16. The update program automatically adds TELchart ECS system files. **No user action required.**



17. A confirmation that you want to update the C-Map system files appear. Press the **OK** button.



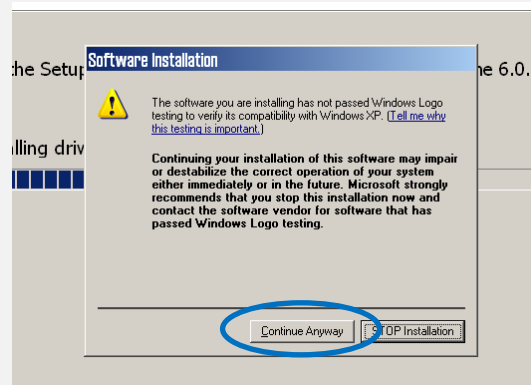
18. C-Map system files are now updated.



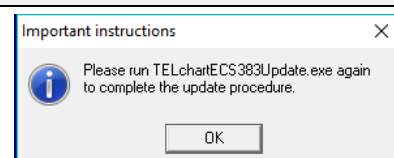
19. This step appears only on Windows XP:

This warning is to be ignored.

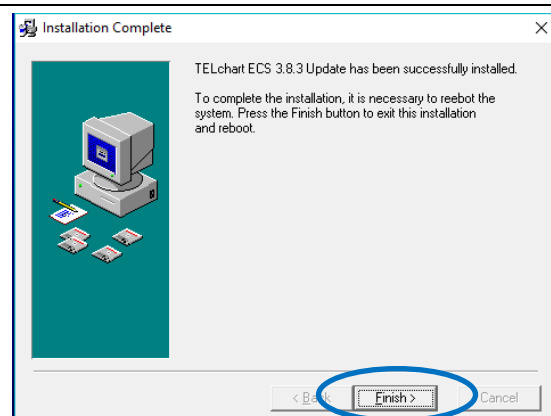
Press the **Continue Anyway** button.



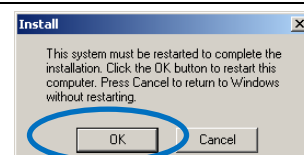
20. If this is the first time you run TELchart ECS383Update.exe, this message will appear.



21. The first run of TELchartECS383Update.exe is complete and a success. Press the **Finish** button.



22. A restart is required before continuing. Press the **OK** button. TELchart ECS will now restart.



23. Perform steps 13-22 once more. This is important!

24. When TELchart ECS 3.8.3.1 Update is finished for the second time, **the update to version 3.8.3 is complete. Your TELchart ECS is now compliant with IHO Presentation Library 4.0.**

25. You can now **add charts and licenses**. Do this as instructed in the User Manual you already have (download the latest from telko.no)

You can download C-Map Professional+ charts from a C-Map server if needed. Please read the **C-Map chart server guide** in the upgrade package for details on how to download and use.

26. Now you can check telko.no for further updates.

When charts and chart licenses are loaded, you are finished with the upgrade of TELchart ECS, and can restart the TELchart ECS computer and verify that all functions are working properly.

We strongly advise you to read the *TELchart ECS Feature Guide* on the desktop for information on all new features and improvements.

Chapter 3. Support & troubleshooting

For support on this release, please contact **Furuno Norway** on service@furuno.no. Further contact information is available on furuno.no.

Chapter 4. Document revision history

Rev	Date	Changes	Performed by
1.0	14 th Sept. 2017	• Initial release	Cato Haugland