



Document Title		Page
Adding S63 Chart Loading support to TELchart ECS		1 of 3
Author	Date	Rev
Pål K. Hansen	7. Apr. 2011	02

## Adding S63 Chart Loading support to TELchart ECS

This document describes the steps needed to add S63 chart loading functionality to a TELchart ECS system. The instructions cover both preparations on shore, and service execution on the vessel.

### Preparation on shore

1. Obtain the System ID numbers for all TELchart ECS units on the vessel.
2. Obtain **S63 license addition custom executables** for each TELchart ECS unit from Telko AS ([support@telko.no](mailto:support@telko.no)) or Furuno Norway. Include the System ID numbers for all TELchart ECS units that are to be upgraded in the request.

These executables will have filenames in the following format:

**eT12345-eTAddS63.exe**

where 12345 will be replaced with the System ID number the executable is intended for.

*NOTE: These custom executables cannot be delivered from Telko AS until a minimum of one full working day has passed after receipt by Telko AS of the request.*

3. Obtain **S57 license codes** for each TELchart ECS unit from Jeppesen Marine, Furuno Norway or Telko AS ([support@telko.no](mailto:support@telko.no)). . Include the System ID numbers for all TELchart ECS units that are to be upgraded in the request.

These licenses will be received as files with the filename:

**password.usr**

The System ID each file is intended for can be determined by inspecting the email the file was delivered with, or by inspection of the file in a text editor.

It is advisable to rename this file to reflect the System ID the file is intended for (Example: **S57-eT12345.usr**). Note that these files may have been renamed prior to delivery to indicate System ID in the filename, such as:

**S57-eT12345.usr**

4. Place the **S63 license addition custom executables** (from Step 2) and the **S57 license codes** (from Step 3) on a memory stick.
5. Download **S63 Chart Loader Manual** from <http://www.telko.no/site/support/tecdis> and place it on a memory stick. Optionally print a copy of this manual for your own reference and/or to be left on the vessel as reference for the TELchart ECS operators.  
Direct Link:  
[http://www.telko.no/furuno/S63%20Loader%20Manual%20EN%20rev%201\\_3.pdf](http://www.telko.no/furuno/S63%20Loader%20Manual%20EN%20rev%201_3.pdf)
6. Download **TELchartECS-S63 Installer.exe** from <http://www.telko.no/furuno> and place it on a memory stick.  
Direct Link:  
<http://www.telko.no/furuno/TELchartECS-S63Installer.exe>



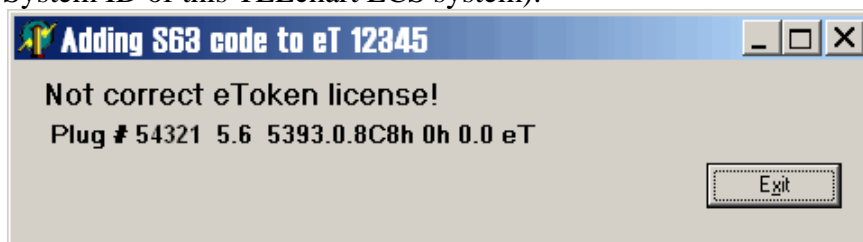
Document Title	Adding S63 Chart Loading support to TELchart ECS		Page	2 of 3	
Author	Pål K. Hansen	Date	7. Apr. 2011	Rev	02

## Installation of the update

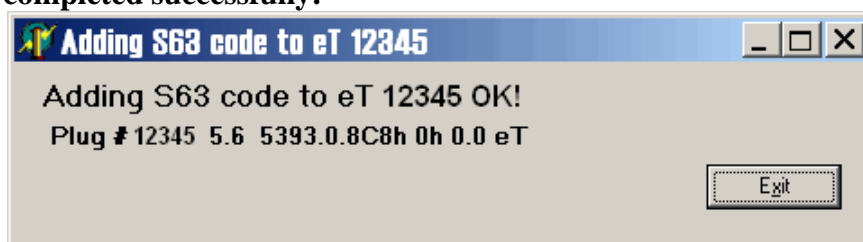
7. If the TELchart ECS software is running, exit the TELchart ECS software (by pressing the toolbar button in the upper left corner of the display).
8. Insert the memory stick containing **TELchartECS-S63 Installer.exe** (from Step 6), the **S63 license addition custom executables** (from Step 2) and the **S57 license codes** (from Step 3).
9. Run the **TELchartECS-S63 Installer.exe** from the memory stick and follow the installation instructions on screen until installation is finished.
10. Run the file **C:\Program Files\TELchart ECS\InstallGina.exe** and answer “Yes”.
11. Answer “Yes” when asked to reboot and wait until the system has restarted.
12. Copy the **S63 license addition custom executable** matching the System ID of the TELchart ECS system being upgraded to the directory:  
C:\Program Files\TELchart ECS\
13. Run the **S63 license addition custom executable** (example: eT12345-eTAddS63.exe) from the location C:\Program Files\TELchart ECS\



If an error message is reported as the following screenshot, the wrong S63 license addition custom executable has been used (this message will also inform you of the System ID of this TELchart ECS system):



If the message ‘Adding S63 code to eT 12345 OK!’ is shown, this step has been completed successfully:





Document Title		Page
Adding S63 Chart Loading support to TELchart ECS		3 of 3
Author	Date	Rev
Pål K. Hansen	7. Apr. 2011	02

14. Press 'Exit' to close the S63 license addition custom executable.
15. Close all open file explorer windows ('My Computer', etc.).
16. Start TELchart ECS Setup.
17. Select the 'Licensing' folder.
18. In the 'Databases' field in the upper right corner of the lower half of the window, select 'Software Modules'.
19. Press the button 'Add License From File'.  
  
If a question is shown to the right of this button with 'YES', 'NO', 'Cancel' prompts, answer 'NO'.
20. Using the directory browser now shown, select the memory stick containing the S57 license codes and select the directory where these .usr files are located.  
  
The .usr files should now be shown to the right of the directory list.
21. Select the .usr file matching the System ID of the current TELchart ECS system and press 'OK'.
22. If a message asking for confirmation of the selected file is shown, press 'YES'.
23. If the S57 license code addition is successful, the message 'Licensing Completed' is shown. Press 'Close'.
24. Close TELchart ECS Setup and any other open windows. Remove the memory stick containing the S57 licenses and S63 license addition custom executables.
25. Verify successful upgrade procedure by starting 'S-63 Chart Loader' from the desktop. If this program starts up without any error messages, the upgrade procedure is successful. Refer to the S63 chart loader manual for guidance if error messages are shown.
26. Exit S-63 Chart Loader.
27. Provide the operators of the system with a copy of 'S-63 Chart Loader Manual', either in electronic or paper form.

## Document Revision History

Revision	Date	Changes
01	07.01.2011	Initial release.
02	07.04.2011	Link to S63 Loader manual updated to revision 1.3