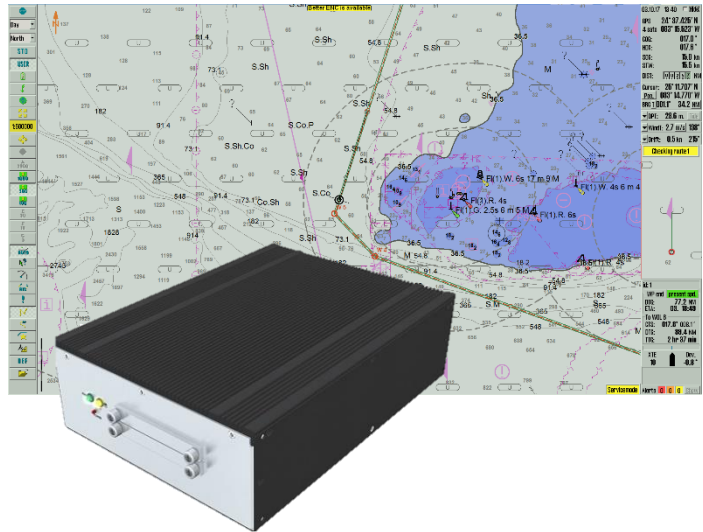


TELCHART 2124 is a standalone ECS computer .

The TELCHART ECS software is based on the ECDIS-certified TECDIS solution, making it a highly capable ECS, made for use in the most demanding professional environments.

It is built with an IEC 60945-approved marine computer, with durability and simplicity in focus.



Software specifications

Software version	TELCHART ECS 3.8.3.x
Usable Charts	S-57 ed.3 ¹ S-63 (including Primar and AVCS) ¹ CM-93/3 (ENC / ENC+ / CAES / CEES / Professional+ ²)

Display of data

Own Ship:	GPS Position, COG, HDG, SOG, STW
Route:	Active route name, DTG, ETA, and CTS-, DTG-, TTG to selected WP
Targets:	BRG, DIST, COG, SOG, POS User selectable: ARPA Target color, ARPA target track color, «Save» ARPA target track.
Others:	EBL, VRM, EBL list, Parallel index lines, Cursor position, True or relative cursor bearing

Functions

Maritime Calculation	Can calculate Range/Bearing to or from a position, with Rhumb-line or Great Circle routes, distances selectable in meters or NM. TTG, ETA, datum conversion
Route navigation monitoring	Off track, Waypoint, Arrival, Grounding, Depth
Alarms	Off track, Index Lane, Channel limit, Waypoint approach, Depth, Non ENC dangers, Restricted Areas, Cautions Areas, Possible danger, Harbour Mode
Autopilot output	Output of: APB, RMB, RMC, RTE
Other Functions	Single click chart update, Night/Day presentation, ARPA-/radar target and -bearing display #1, ARPA-/radar target and -bearing display #2, MOB, SAR, Log book w/replay functionality, docking Conning display, Tooltip, User defined chart presentation, easy transfer of configuration to replacement unit, easy screen dump facility when in navigation mode.

- - -

¹ S57 and S63 charts require a compilation license. Contact your Telko distributor/dealer today for more information on pricing.

² C-Map Professional+ is not an official chart service, it does however provide world scale charts

Options

1-click chart loading	Freely available for the following chart solutions: Navtor NavStick and NavBox, Nautisk Neptune, ChartCo Passagemanager, and GNS V-drive.
AIO overlay (Chart provider subscription service)	Show Temporary and Preliminary Notices as an overlay on the chart, with the Admiralty Information Overlay (AIO) service by UKHO.
Radar Overlay (Optional purchase)	Display of radar echoes from several Furuno radars
Seismic streamers (Optional purchase)	Streamer configuration with up to 24 streamers displayed graphically in chart.
Navtex (Optional purchase)	Connects to all Navtex receivers sending in the NRX format. You can display navtex messages with position references.
Weather overlay (Optional purchase, C- Map subscription required.)	Advanced weather overlay feature using top quality commercial maritime weather forecast data available as a subscription service from C-Map.

Hardware specifications

Operating system	Windows 7 Pro 32-bit, English
Processor	Intel Celeron 3955U 2Ghz
Chipset	Intel Skylake U
Graphics	Intel HD 520
Memory (RAM)	4 GB
Storage	150 GB SATA SSD (approx. 120GB free) in a removable disk bay

Power Supply

Power supply	Multipower - 115 to 230 VAC, 50 ~ 60 Hz + 24 VDC
Power cons. max	50W
Power cons. typ.	39W

Maximum external USB power load is 10W

Ports

Monitor	1x DVI-I, 1x DVI-D and 1x Displayport(DP)
COM	4x RS422/485 isolated com ports, on phoenix 5-pin connectors
Ethernet	4x 10/100/1000 Mbps Gigabit LAN on RJ45 connectors
USB	4x USB 2.0 (type A) 4x USB 3.0 (type A)
Other	1x SD card slot

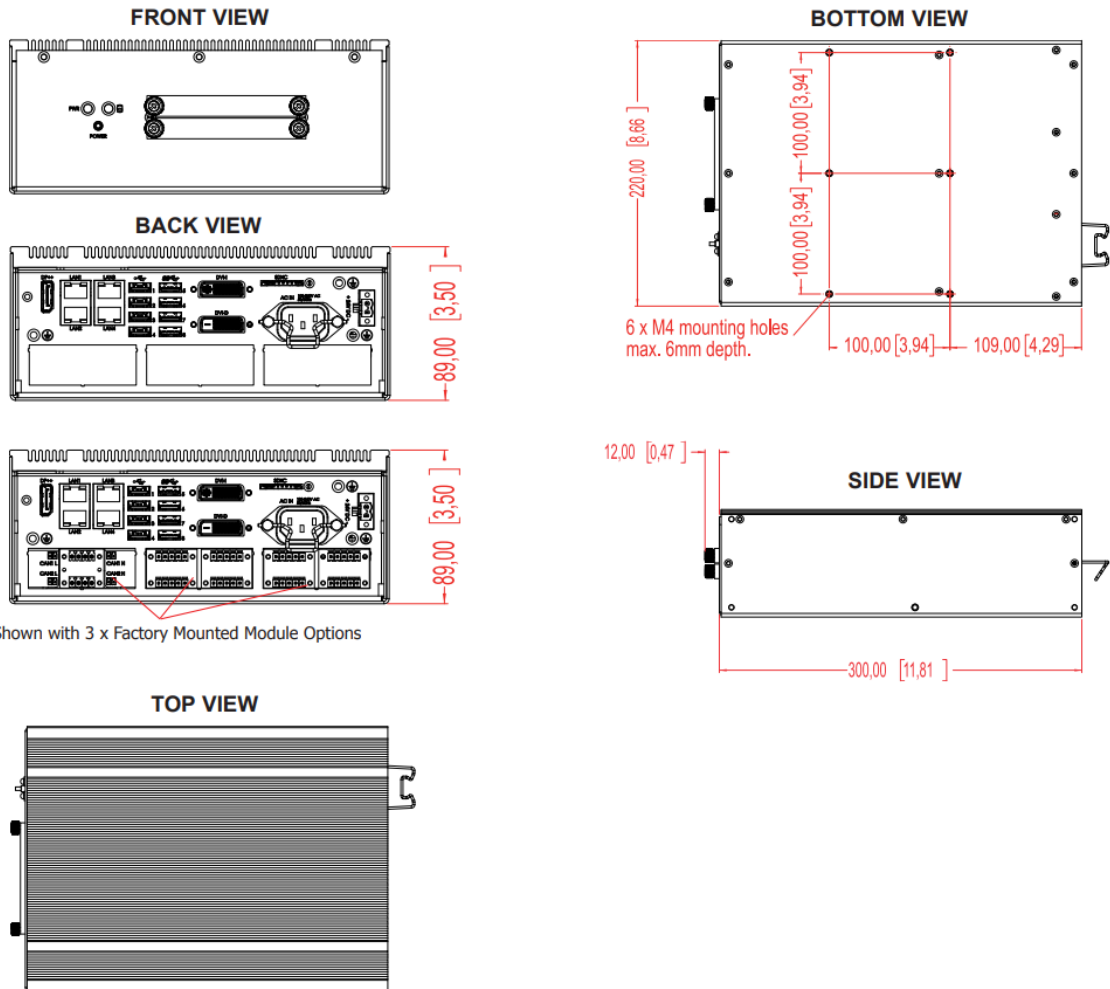
Port description

Sensor	Sentences	IP	IEC 61162-1 Ed 4.0	Proprietary
Position 1:	GNS, GGA, GLL, RMC		✓	
Position 2:	GNS, GGA, GLL, RMC, VDO	✓	✓	
COG/SOG1:	VTG, RMC, OSD, VDO		✓	
COG/SOG1:	VTG, RMC, OSD, VDO	✓	✓	
Heading 1:	HDT, OSD, VHW, VDO, THS		✓	
Heading 2:	HDT, OSD, VHW, VDO, THS	✓	✓	
Water speed:	VHW, OSD, VBW	✓	✓	
Radar ARPA 1:	TTM	✓	✓	
Radar ARPA 2:	TTM	✓	✓	
Radar cursor 1:	RSD	✓	✓	
Radar cursor 2:	RSD	✓	✓	
AIS (In- and output):	Aixxx	✓	✓	
Depth:	DPT, DBT	✓	✓	
Rel. wind:	MWV	✓	✓	
Route:	WPL + RTE	✓	✓	
Alarm ctrl. (In- and output)	ALR + ACK		✓	✓
Navtex	NRX	✓	✓	
Search	FLIR		✓	
Option 1		✓	✓	✓
Option 2		✓	✓	✓
Option 3		✓	✓	✓
Option 4		✓	✓	✓
Printer:	USB port printer connection only			

Equipment List

1. Computer, HT B30GI STC-021-M10000
2. TELchart ECS 3.8.3.x software
3. TELchart ECS code plug
4. Accessories Box
 - a. CD-bag
 - i. Driver CD from Hatteland
 - ii. Chart database DVD C-Map Professional+
 - iii. Chart database DVD C-Map CAES
5. Logitech K120, keyboard
6. Logitech TrackMan Marble, trackball

Hardware dimensions



Document revision history

1.0	4 th October 2018	Initial release	Cato Haugland
1.1	13 th November 2018	Updated options, data sheet styling	Cato Haugland